



RHES

Renaissance Health Enterprise Suite

Reliable. Resilient. Ready for Care.

SRIT India Ltd.

Established in 1999 | CMMi Level 5
ISO 20000-1:2018 | ISO 27001:2015
ISO 9001:2015 | ISO 14001:2015

25 Years

In Healthcare IT Services Market



18 Countries

Where we service



40+ Modules

Integrated Modules in One Solution





Quality

CMMI Level 5 (Dev)
SSE-CMM Level 5(v.3.3) for Security
System, ISO 20000-1:2011, ISO
27001:2013,
ISO 9001:2008,
Social Accountability 8000



Standards & Compliance

ICD 10, CPT, LOINC, CDA, CCR,
HL7 V3, FHIR,
DICOM, DDB, ASTM
JCI | NABL | NABH | ACHS |
EMRAM | ABHA



Certifications

TÜV-STAR Rating 4

For Corporate Governance & Integrity,
Occupational Health & Safety, Quality,
Environment, Information Security,
Corporate Social Responsibility,
Financial Disclosure,
Brand/Innovation, Fair Trade &
Competition.

Our Prime Clients - India



GOVERNMENT OF WEST BENGAL
Health & Family Welfare Department
109 Hospitals &
4000 Health Centres



National Institute of Mental
Health & Neuro Sciences



136 Health Centers



UNM Children
Hospital



YSR Aarogyasri
Health Care Trust



Our Key Clients - MEA Region



مستشفى كينغز كوليدج لندن
King's College Hospital London



ALSALAM
SPECIALIST HOSPITAL
مستشفى السلام التخصصي



**NATIONAL KIDNEY AND
TRANSPLANT INSTITUTE**



THE REPUBLIC OF UGANDA
MINISTRY OF HEALTH



مستشفى الإمارات
Emirates Hospital

جميرا
Jumeirah



القيادة العامة للقوات المسلحة
JORDAN ARMED FORCES



Republic of
Mauritius



KAN THAR YAR
INTERNATIONAL SPECIALIST HOSPITAL

RHES FUNCTIONAL & SOLUTION ARCHITECTURE

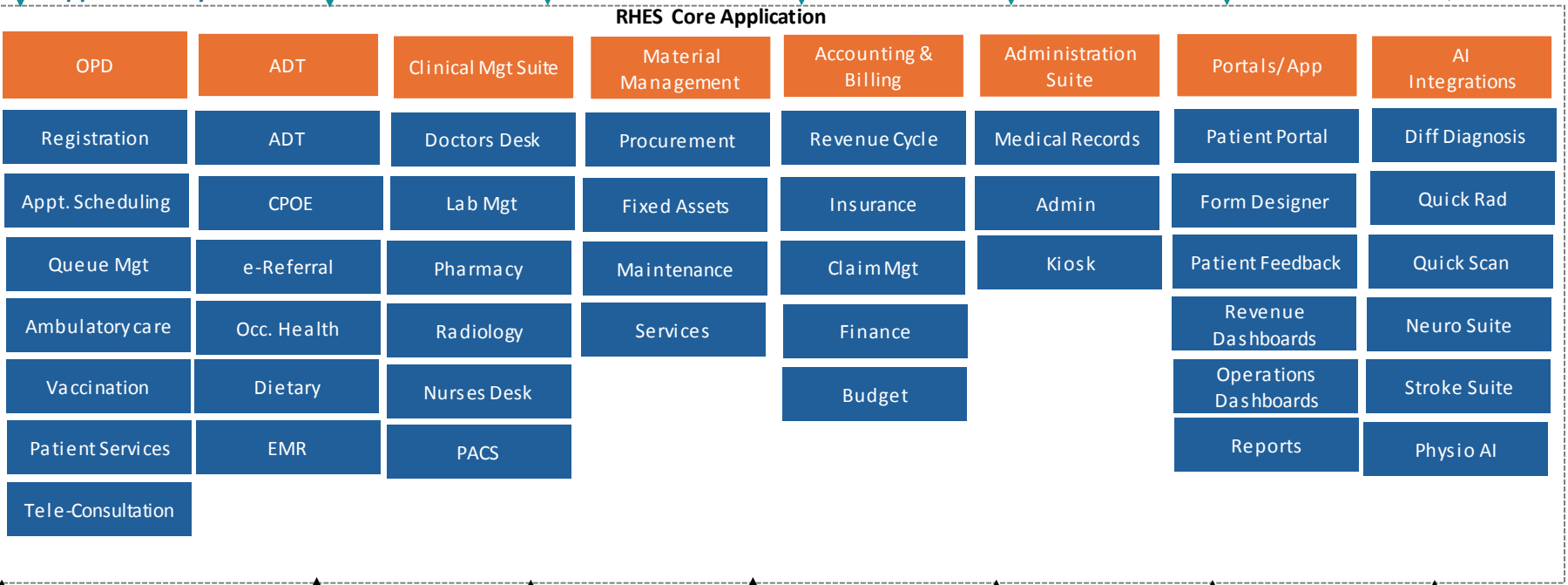
End User Devices



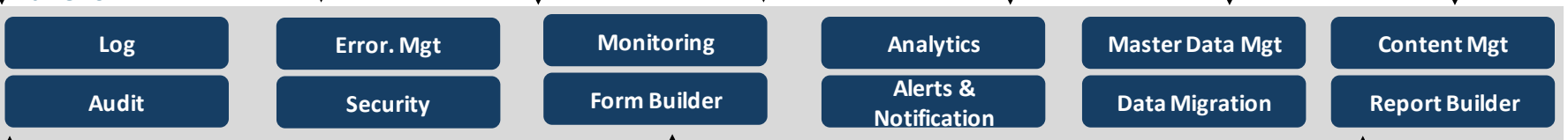
Visualization Layer



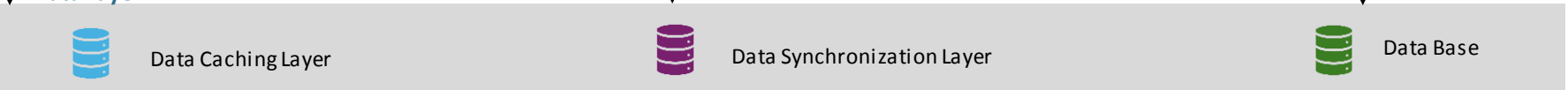
Application Layer



Framework



Data Layer



Interoperability

Availability

Scalability

Performance

Quality Layer

Encryption

Authorization

Single Sign On

Authentication

Security Layer



Medical Devices



Civil Registry



Payment Gateways

ORACLE
E-BUSINESS SUITE

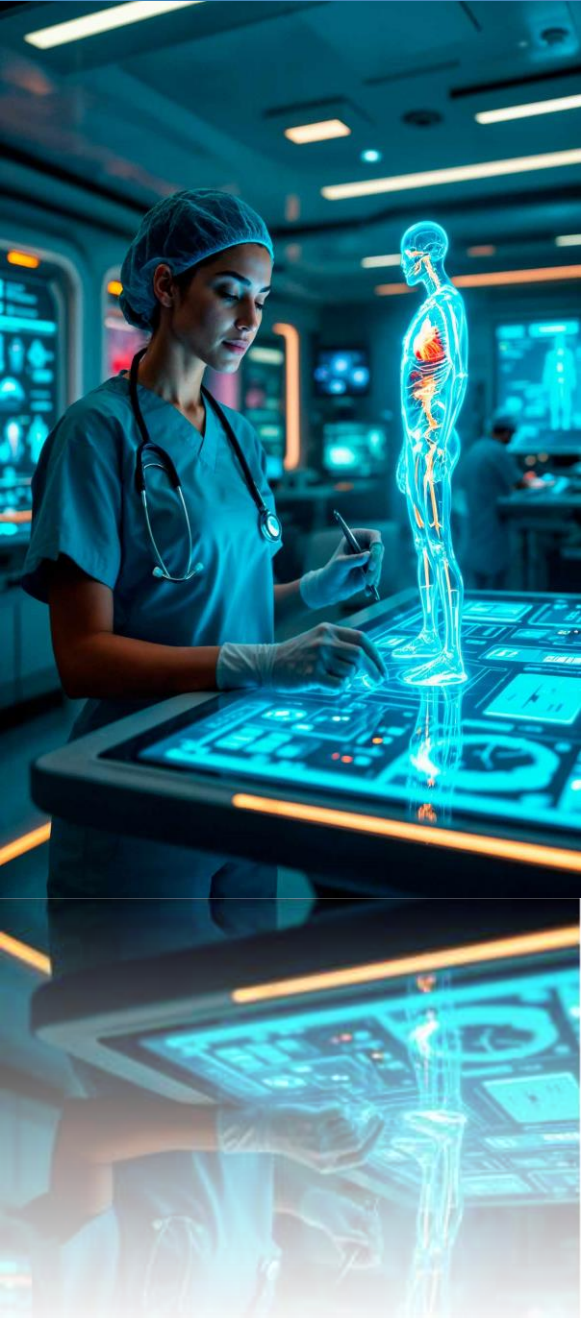


GOVT Portals



Active Directory

AI Interventions



- **AI-Powered Differential Diagnosis** - An intelligent clinical support solution where clinician input chief complaints and clinical parameters, and AI algorithms instantly suggest possible diagnoses enhancing decision-making, saving time, and improving patient outcomes.
- **Tamper proof Voice to Text** - Seamlessly capturing patient-doctor conversations through AI-powered Voice-to-Text, securely stored and verified on blockchain for trusted, tamper-proof medical records.
- **Scribe to Text** - Simplifying life for nurses and doctors by digitizing clinical documents in real-time no more bulky paper files, just seamless, instant access to patient records.
- **AI Assistant for Interactive Appointment Booking** - A smart, user-friendly virtual assistant designed to help users seamlessly book, reschedule, or cancel appointments through natural, real-time conversations.

450+

Lab Equipment's Integrated Seamlessly

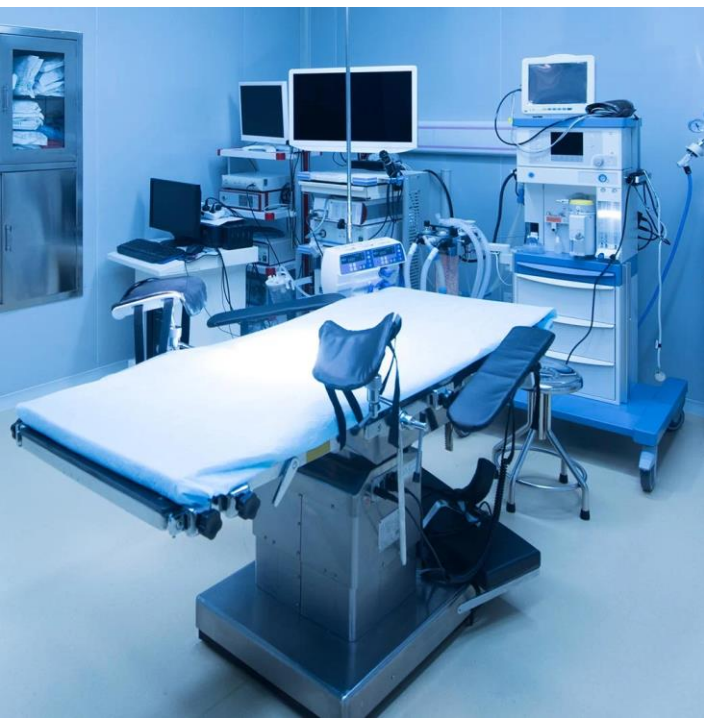
Bi-Directional Integrations



350+

Imaging & Radiology
Modalities Integrated

Using HL7 & DICOM Standards



550+

Portals & Other Medical Devices

HL7, FHIR, JSON & DB Integrations





WhatsApp Business

- Welcome Messages
- Appointments Scheduling
- Payment Confirmations
- Invoice / Receipts Sharing
- General Reminders
- Admission Notifications
- Transfer Notifications
- Discharge Notifications
- Payment Due Notifications
- Critical Value Alerts for Labs
- Vaccination Reminders
- Awareness Campaign messages
- 24/7 Chatbot



SMS Gateways

- Time-slot or token updates
- Appt Rescheduling Alerts
- Appt Cancellation Alerts
- Results Ready Alerts
- Payment Links
- Insurance approval/rejection alerts
- OTP Validations
- Comply with Telecom Regulations.



POS Integration

- POS Integration
- Real Time Bill Payment
- Multi-Mode Payment Support
- Centralized Billing Dashboard
- Dedicated Reports for POS Payments
- Error Free Payment Reconciliation
- Counter wise POS Mapping
- Refund & Cancellation Handling
- Integrated with Finance



Kiosk Integration

- Patient Self-Registration / Check-In
- Appointment Mgt
- Demographic & ABHA Updates
- Bill Payment & Invoice Printing
- Reports Access & Printing
- Token / Queue System Integration
- Feedback Collection / Patient Survey

RHES Standards & Compliance

Industry Standard	Description
HIS Application Web 2.0	Web enabled application, Web 2.0
Information access/ transfer protocols	SOAP, HTTP/HTTPS
Interoperability	Web Services, Open standards
Information Security	System to be ISO 27001 compliant
Operational integrity & security management, SM	System to be ISO 17799 compliant, ISO 20000
IT Infrastructure management	ITIL / EITM specifications
Project Documentation	IEEE/ISO specifications for documentation
Internet Protocol	IPv6 ready equipment
UHID	Unique Health Identifier, as a unique (primary or secondary) patient identifier.
Medical standards	DICOM 3.0 Compliant
HL 7 / FHIR	Seamless handling of inbound and outbound HL7 messages from any system that has similar capabilities; V2.3 or above
Equipment compatibility	All equipment will be used with international bench-marks that are workable in India
Meta Data and Data Standards (MDDS)	The HIS Solution shall adhere to Meta Data and Data Standards (MDDS) as approved by the Ministry of Health & Family Welfare, Government of India.
International Classification of Traditional Medicine (ICTM)	Ayurveda, Yoga, Unani, Siddha, Homeopathy systems of medicine as distinct from the allopathic (Western) system of medicine



SRIT India Ltd.

**Established in 1999 | CMMi Level 5
ISO 20000-1:2018 | ISO 27001:2015
ISO 9001:2015 | ISO 14001:2015**



+91 81139 82221



info@sritindia.com



www.sritindia.com